

GA-AS-C Standard Rivet

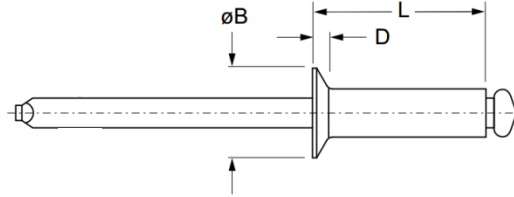
Countersunk head · Aluminium body · Steel stem
2.4 mm (3/32") - 6.4 mm (1/4")

Features

- Non-structural blind breakstem rivet designed for a wide range of applications
- Cost effective standard rivet
- Installs quickly and easily
- Coloured / painted options available on request

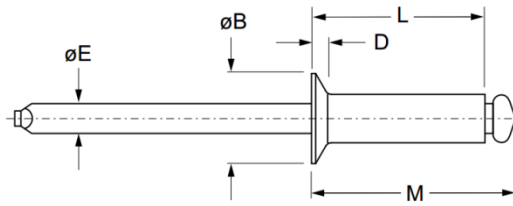
Material

- Body: Aluminium alloy 5056
- Stem: Steel, zinc plated



IFI Convention

Part No.	Size ø	Grip Range		Hole Size		L max.	øB	D	Shear (typical) kN	Tension (typical) kN							
		nom.	min.	max.	min.						max.						
GA-AS-32C	2.4 (3/32")	0.5	3.2	2.46	2.54	6.4	4.52 ~ 5.03	0.81	0.40	0.53							
GA-AS-34C		3.2	6.4			9.5											
GA-AS-36C		6.4	9.6			12.7											
GA-AS-41C	3.2 (1/8")	0.5	1.6	3.28	3.38	5.4	6.05 ~ 6.65	1.02	0.76	0.98							
GA-AS-42C		1.6	3.2			7.0											
GA-AS-43C		3.2	4.8			8.6											
GA-AS-44C		4.8	6.4			10.2											
GA-AS-45C		6.4	8.0			11.7											
GA-AS-46C		8.0	9.6			13.3											
GA-AS-48C		9.6	12.7			16.5											
GA-AS-410C		12.7	15.9			19.7											
GA-AS-412C		15.9	19.1			22.9											
GA-AS-52C		4.0 (5/32")	0.5			3.2					4.06	4.17	7.6	7.52 ~ 8.33	1.27	1.16	1.56
GA-AS-53C	3.2		4.8	9.2													
GA-AS-54C	4.8		6.4	10.8													
GA-AS-55C	6.4		8.0	12.4													
GA-AS-56C	8.0		9.6	14.0													
GA-AS-58C	9.6		12.7	17.1													
GA-AS-510C	12.7		15.9	20.3													
GA-AS-512C	15.9		19.1	23.5													
GA-AS-62C	4.8 (3/16")		0.5	3.2	4.88	4.98	8.3	9.04 ~ 10.03	1.52	1.69			2.22				
GA-AS-63C			3.2	4.8			9.8										
GA-AS-64C		4.8	6.4	11.4													
GA-AS-65C		6.4	8.0	13.0													
GA-AS-66C		8.0	9.6	14.6													
GA-AS-68C		9.6	12.7	17.8													
GA-AS-610C		12.7	15.9	21.0													
GA-AS-612C		15.9	19.1	24.1													
GA-AS-614C		19.1	22.2	27.3													
GA-AS-616C		22.3	25.4	30.5													
GA-AS-82C	6.4 (1/4")	0.5	3.2	6.53	6.63	9.5	12.07 ~ 13.34	2.03	3.11	4.09							
GA-AS-84C		3.2	6.4			12.7											
GA-AS-86C		6.4	9.6			15.9											
GA-AS-88C		9.6	12.7			19.1											
GA-AS-810C		12.7	15.9			22.2											
GA-AS-812C		15.9	19.1			25.4											
GA-AS-814C		19.1	22.2			28.6											
GA-AS-816C		22.3	25.4			31.8											



DIN Convention

Part No.	Size \varnothing nom.	Grip Range		Hole Size		L max.	$\varnothing B$ -	D -	Shear (typical) kN	Tension (typical) kN
		min.	max.	min.	max.					
GA-AS-2406C	2.4 (3/32")	0.5	3.0	2.5	2.6	6	4.3 ~ 5.0	0.8	0.40	0.53
GA-AS-2408C		3.0	5.0			8				
GA-AS-2409C		4.0	6.0			9				
GA-AS-2412C		6.0	9.0			12				
GA-AS-3205C	3.2 (1/8")	0.5	2.0	3.3	3.4	5	5.8 ~ 6.5	1.2	0.76	0.98
GA-AS-3206C		1.0	3.0			6				
GA-AS-3207C		2.0	4.0			7				
GA-AS-3208C		3.0	5.0			8				
GA-AS-3209C		4.0	6.0			9				
GA-AS-3210C		5.0	7.0			10				
GA-AS-3212C		7.0	9.0			12				
GA-AS-3214C		9.0	11.0			14				
GA-AS-3216C		11.0	13.0			16				
GA-AS-3218C		13.0	15.0			18				
GA-AS-3220C	15.0	17.0	20							
GA-AS-3225C	17.0	22.0	25							
GA-AS-4006C	4.0 (5/32")	0.5	2.0	4.1	4.2	6	7.0 ~ 8.0	1.5	1.16	1.56
GA-AS-4008C		2.0	4.0			8				
GA-AS-4010C		4.0	6.0			10				
GA-AS-4012C		6.0	8.0			12				
GA-AS-4014C		8.0	10.0			14				
GA-AS-4016C		10.0	12.0			16				
GA-AS-4018C		12.0	14.0			18				
GA-AS-4020C		14.0	16.0			20				
GA-AS-4025C		16.0	21.0			25				
GA-AS-4806C		4.8 (3/16")	0.5			1.5				
GA-AS-4808C	1.5		3.5	8						
GA-AS-4810C	3.5		5.5	10						
GA-AS-4812C	5.5		7.5	12						
GA-AS-4814C	7.5		9.5	14						
GA-AS-4816C	9.5		11.5	16						
GA-AS-4818C	11.5		13.5	18						
GA-AS-4820C	13.5		15.5	20						
GA-AS-4825C	15.5		20.5	25						
GA-AS-4830C	20.5		25.5	30						
GA-AS-6412C	6.4 (1/4")	3.0	6.0	6.5	6.6	12	11.5 ~ 13.0	2.2	3.12	4.10
GA-AS-6416C		6.0	10.0			16				
GA-AS-6418C		10.0	12.0			18				
GA-AS-6421C		12.0	15.0			21				
GA-AS-6425C		15.0	19.0			25				



Can't find what you are looking for?

We can provide customized finishing and colouring.
Contact your nearest [Gripwell](http://www.gripwell.com.sg) team for assistance!